



Lily Mazieres

More4apps

Product Specialist

UK & Europe

Lily.mazieres@more4apps.com

FBDI Fatigue

Breaking Free from Complex Spreadsheet
Data Loads



Agenda

Not All Spreadsheets are Created Equal

What's the problem with FBDI?

Moving Closer to an Ideal Solution

More4apps ERP Cloud Toolbox

Your Questions

Misconceptions about Oracle

Out-of-the-Box Spreadsheet Loading Solutions

FBDI

ADFdi



If you use **FBDI**,
what are the biggest
pain points with it?

Not all Spreadsheet Loading Solutions are created Equal



Your documents



Excel Spreadsheet



Oracle documents

Spreadsheet loading should be Quick, Easy and Painless

FBDI Templates for SCM Supply Chain & Manufacturing

Manufacturing

Import Production Reports
Process Work Definition Import
Process Work Order Import
Process Work Order Material Transaction Import
Process Work Order Operation Transaction Import
Work Definition Import
Work Order Import
Work Order Material Transaction Import
Work Order Operation Transaction Import
Work Order Resource Transaction Import

Inventory

Cycle Count Import
Import Supply Order
Interfaced Pick Transaction Import
Inventory Balance Message Import
Inventory Reservation Import
Inventory Transaction Import
Perform Shipping Transaction Import
Recall Notices
Receiving Receipt Import
Shipment Request Import
Standard Costs

Maintenance

Import Installed Base Assets
Import Meter Readings
Import Product Genealogy
Maintenance Program Import
Maintenance Work Definition Import
Maintenance Work Order Import

Product Lifecycle

Catalog
Change Orders
Idea Import
Item
Item Structure
Product Proposal Import
Requirement Import

Order Management

Cost Lists
Discount Lists
Import Sales Orders
Price List
Price Lists Batch

Supply Chain Planning

Collaboration Order Forecasts
Cross-Reference Data
Order Orchestration
Supply Chain Planning Approved Supplier Capacity
Supply Chain Planning Approved Supplier List
Supply Chain Planning Attribute Values
Supply Chain Planning Available-to-Promise Rules
Supply Chain Planning Bill Of Resources
Supply Chain Planning Bookings History
Supply Chain Planning Calendar Assignments
Supply Chain Planning Calendars
Supply Chain Planning Carriers
Supply Chain Planning Catalogs
Supply Chain Planning Causal Factors
Supply Chain Planning Currencies
Supply Chain Planning Customers
Supply Chain Planning Demand Classes
Supply Chain Planning ERP Integration Service Parameters
Supply Chain Planning External Forecasts
Supply Chain Planning Fiscal Calendars
Supply Chain Planning Forecast Measures
Supply Chain Planning Interlocation Shipping Methods
Supply Chain Planning Item Cost
Supply Chain Planning Item Policy Overrides
Supply Chain Planning Item Structures
Supply Chain Planning Item Subinventories
Supply Chain Planning Item Substitute
Supply Chain Planning Items
Supply Chain Planning Key Customer Options
Supply Chain Planning Locations
Supply Chain Planning Measures
Supply Chain Planning Movement Requests
Supply Chain Planning Option Bookings History
Supply Chain Planning Option Shipments History
Supply Chain Planning Organizations
Supply Chain Planning Planned Order Supply
Supply Chain Planning Planners
Supply Chain Planning Planning Allocation Rules
Supply Chain Planning Price Lists
Supply Chain Planning Purchase Order Receipt History
Supply Chain Planning Purchase Order Requisitions
Supply Chain Planning Real Time Supply Updates
Supply Chain Planning Region Zone Mappings
Supply Chain Planning Regions
Supply Chain Planning Reservations
Supply Chain Planning Resource Availability
Supply Chain Planning Resources
Supply Chain Planning Routings
Supply Chain Planning Safety Stock Levels
Supply Chain Planning Sales Orders
Supply Chain Planning Shipments History
Supply Chain Planning Sourcing Rules
Supply Chain Planning Subinventories
Supply Chain Planning Suppliers
Supply Chain Planning Supply On Hand
Supply Chain Planning Transfer Orders
Supply Chain Planning Units of Measure
Supply Chain Planning User-Defined Hierarchy
Supply Chain Planning Work Order Component Demands
Supply Chain Planning Work Order Operation Resources
Supply Chain Planning Work Order Supplies
Supply Chain Planning Zones
Vendor-Managed Inventory Relationships

FBDI Templates for ERP Financials

Assets

Fixed Asset Lease Import
Fixed Asset Mass Additions Import
Fixed Asset Mass Adjustments Import
Fixed Asset Mass Retirements Import
Fixed Asset Mass Revaluations Import
Fixed Asset Mass Transfers Import
Import Previous Year Tax Report Data
Import Units of Production
Physical Inventory Interface
Post Mass Update Descriptive Details

Cash Management

Cash Management Bank Statement Data Import
Cash Management Bank Statement Reconciliation Data Import
Cash Management Cash Position Data Import
Cash Management External Transactions Import

Lease Accounting

Lease Contract Amendments Import
Lease Contract Impairment Import
Lease Contract Import
Lease Contract Manage Import
Lease Properties Import

Receivables

AutoInvoice Import
Credit Management Data Points Import
Receivables Standard Receipt Import
Upload Customers

Revenue Management

Billing Data Import
Revenue Basis Data Import

General Ledger

Chart of Accounts Mapping Rules Import
Cross-Validation Rules Import
Cross-Validation Combinations Import
Import Account Combinations
Import and Calculate Daily Rates
Import General Ledger Budget Balances
Import Historical Rates
Import Segment Values and Hierarchies
Journal Import

Budgetary Control

Budgetary Control Budget Import

Payables

Payables Payment Request Import
Payables Standard Invoice Import

Payments

Import Legacy Credit Cards
Supplier Bank Account Import

Customer Data Model

Customer Import

Tax

Import SHAAM Data Files
Tax Entry Repository Data Upload Interface

Subledger Accounting

Subledger Accounting Mappings Set Values Import

Financials Common Module

Intercompany Transaction Import

Regional Localizations

Import Document Actions
Import Fiscal Document Approval Information
Inbound Fiscal Document Import
Import Standalone Fiscal Documents
Outbound Fiscal Document Import

Americas

Payables Bank Returns Data Upload Interface
Payables Collection Documents Data Upload Interface
Receivables Bank Returns Data Upload Interface

EMEA

Netting Agreements Import

Asia/Pacific

China Value Added Tax Invoice Import

FBDI Templates for ERP Projects & Procurement

Project Foundation

Import Projects
Import Project Tasks
Import Project Rate Schedules and Overrides
Import Resource Breakdown Structures

Projects Control

Import Financial Project Plans
Import Project Budgets
Import Project Forecasts
Import Project Progress
Import Asset and Assignments Process
Import Assignment Labor Schedules
Import Payroll Costs
Import Project Expense Costs
Import Project Inventory Costs
Import Project Labor Costs
Import Project Miscellaneous Costs
Import Project Nonlabor Costs
Import Project Supplier Costs
Import Project and Task Transaction Controls
Import Unassigned Asset Lines

Project Performance Reporting

Import Project Key Performance Indicators

Project Management

Import Project Enterprise Expense Type
Resources
Import Project Enterprise Resources
Import Project Plan

Resource Management

Import Project Resource Assignments
Import Project Resource Requests
Import Resource Actual Hours
Import Resource Pools and Memberships

Billing Contracts and Revenue

Import Project Billing Events

Grants Management

Import Awards
Import Funding Sources
Import Grants Personnel
Import Keywords

Purchasing

Blanket Purchase Agreements Import
Contract Purchase Agreements Import
Purchase Orders Import

Supplier Model

Import Suppliers
Import Supplier Addresses
Import Supplier Attachments
Import Supplier Business Classifications
Import Supplier Contacts
Import Supplier Products and Services
Categories
Import Supplier Sites
Import Supplier Site Assignments

Spend Classification

Data Set Import

Sourcing

Import Negotiation Lines

Supply Chain Healthcare

External Purchase Prices Import

Self Service Procurement

Import Requisitions

Payments

Import Legacy Credit Cards
Supplier Bank Account Import

The FBDI Bottleneck

- Multiple Templates
- Multi-Job Workflow
- Dependence on Internal IDs

Reference ID in FBDI for customer import for Account Receivables Module

Question 1 Views 0 Comments



Dhruba Analyst Red Ribbon

Sep 4, 2025 11:31AM

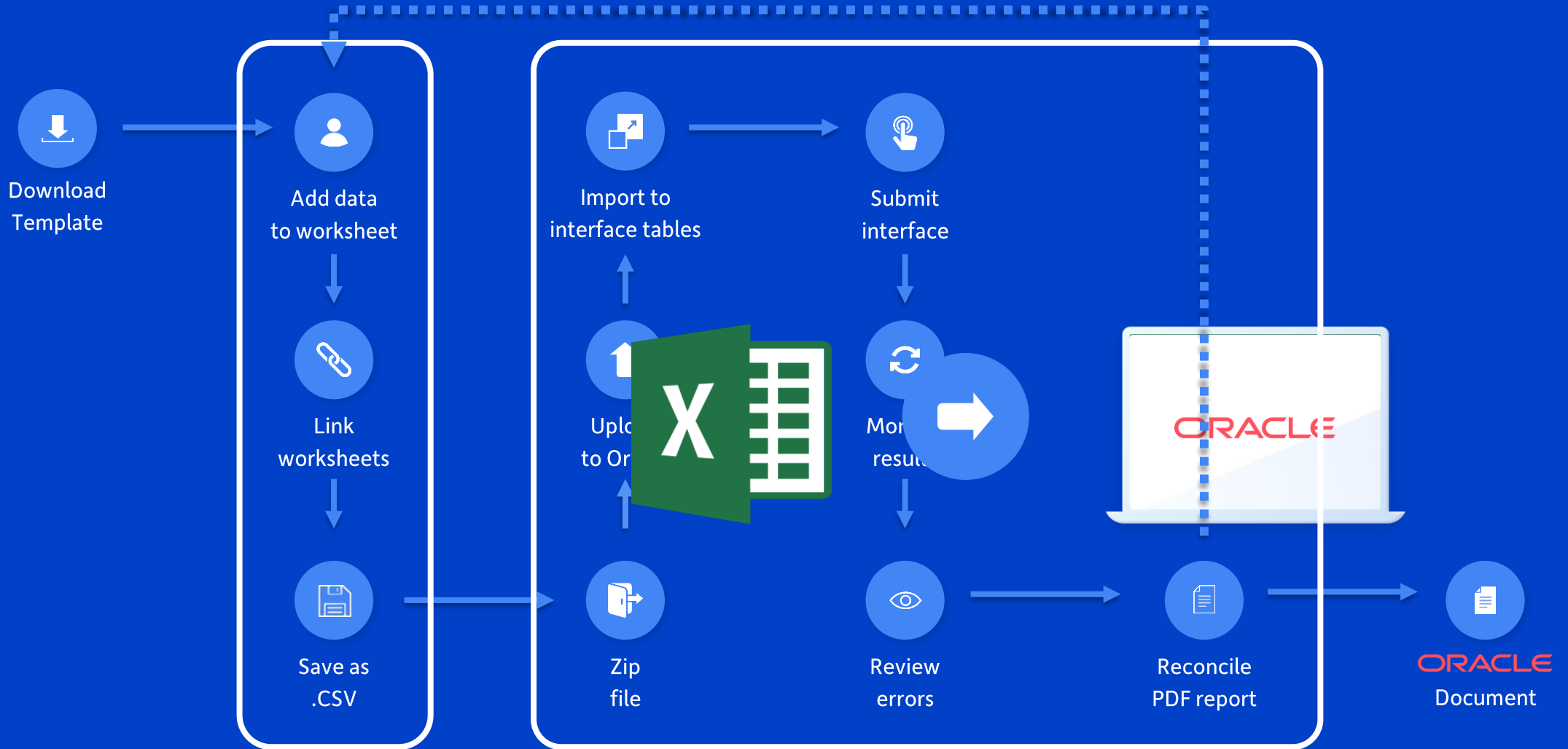
Summary:

In the Oracle Cloud FBDI template for customer import, there are 19 sheets, each containing various Reference IDs like Party, System, and Account Reference IDs. I'd like to understand the correct usage of these Reference IDs. When importing customers from different source systems, can we assign unique and random Reference IDs ourselves, or do we need to use the Reference IDs from the source system? Additionally, what are the best practices for managing these Reference IDs to ensure proper linkage between records and successful data import, especially when handling data from multiple sources?

cumbersome

Any suggestions on single-pager system like Web ADI

FBDI process flow



Can you modify FBDI templates?

Accepted answer 151 Views 3 Comments

Risk 2: Changes to File-Based Data Import Templates (FBDIs)

Solution: Review updates to the FBDI spreadsheets before the patch is applied.

Oracle releases the latest File Based Data Import (FBDI) templates for each patch prior to the update taking place in the system. The majority of the FBDIs will not have any changes between patches, but those that do need to have the new template incorporated in your conversion process before the patch is applied. Changes to the FBDI include added columns, removed columns, and updated fields. **If the correct FBDI template is not used after the patch was applied, then data might be loaded to incorrect fields.** As soon as Oracle releases the updated FBDI templates you need to compare them with the version of the FBDI that you are currently using and identify any changes. Automated tools to perform the quarterly FBDI comparisons are part of Definian's data migration services.

Flexfields are all in the template as attributes and dnt play with the template at all as what you do with FBDI is to press a button which produces a zip with CSV inside **Playing with the columns can move field order and it will break the FBDI.**

The FBDI Bottleneck

- Multiple Templates
- Multi-Job Workflow
- Dependence on Internal IDs
- No Real-Time Validation
- Cryptic Error Messages & Debugging
- Rigid templates
- Template Version Skew
- Lack of native attachment
- ActiveX support

The typical flow



Spreadsheet loading should be Quick, Easy and Painless

Spreadsheet loading tools that work for your business



Accelerated validation

Preload Validation
Intuitive Error Messages Matched to Data



Single Spreadsheet

Single UI
Consolidate & Download Data
in one Sheet



Flexible Formatting

Flexible & Reusable Layouts
Copy&Paste, Formulas



Reliability

Upgrade-Proof
Secure, Low IT Involvement



ERP Cloud Toolbox

Finance Module

✓ Flexible Layouts

✓ Single Spreadsheet

Product Definition Module

✓ One-Click Uploading

✓ In-Row Error Feedback

Projects Module

✓ Data-Owners own the Process

Procurement Module

✓ Advanced Validation

✓ Integrated Download

Product Demonstration



Not all spreadsheets are created Equal

	Oracle FBDI	ERP Cloud Toolbox
End-User Independence of IT Dept	⊖	✓
Precise Error Reporting in the Worksheet	⊖	✓
Download Existing Data Objects	⊖	✓
All Data in a Single Worksheet	⊖	✓
Realtime Data Validation	⊖	✓
Data Entry Forms	⊖	✓
Customize and Save Layouts	⊖	✓
Supports Mass Data Entry	✓	✓
Data Upload is Supported by Oracle	✓	✓
Oracle-Secured End-User Connection	✓	✓

Q&A

End User Education Days



1

Virtual

May 13, 2026

3 Sessions (EBS & Cloud)

4 Speakers

Free Registration!

2

Orlando

ASCEND

June 8, 2026 | 12 - 3:30 pm

Orlando, Florida

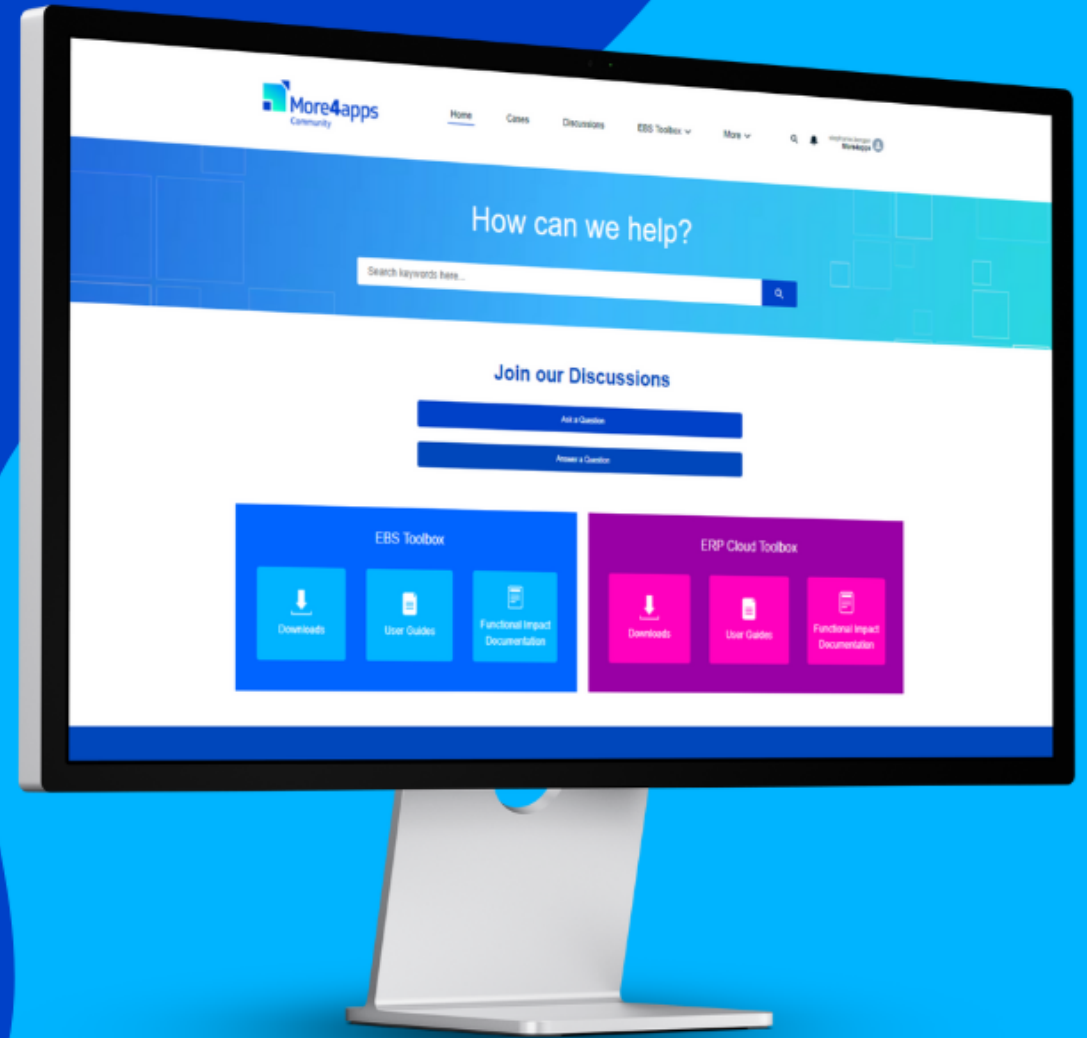
2 Sessions

First come, first serve

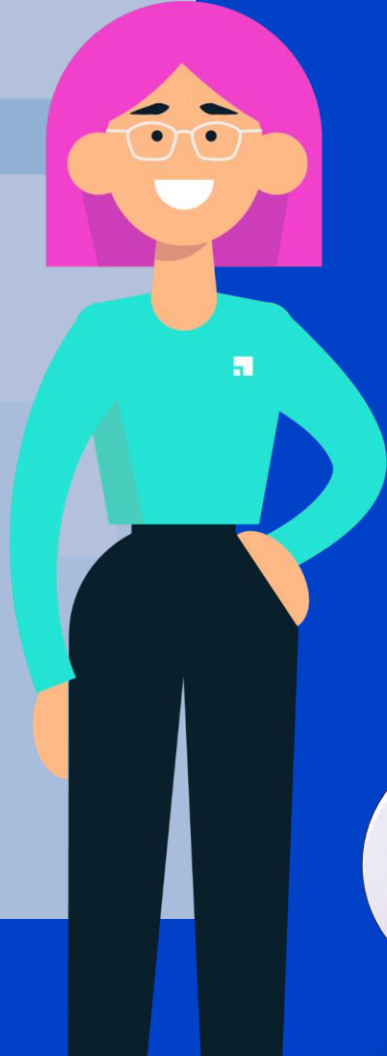
Join the More4apps Community, an interactive, self-service platform built with *you* in mind.

- ✔ 1000s of resources
- ✔ Discussion forums
- ✔ Download latest releases
- ✔ Submit support requests

www.community.more4apps.com



Thank You!



Lily Mazieres

More4apps

Product Specialist

UK & Europe

Lily.mazieres@more4apps.com

More4apps: ERP Cloud Toolbox Modules

Finance Module

- Payables Invoices
- Receivables Invoices & On-Account Credit Memos
- Holds & Releases
- Suppliers & Customers
- Asset Additions, Adjustments & Transfers. **Mass Additions (Planned Mar 2026)**
- Assets Retirements & Reinstatements
- Supplier Payment Details
- Receivable Receipts
- GL Journals
- AP Manual Payments

Procurement Module

- Standard Purchase Orders
- Cancel & Close Purchase Orders
- Requisitions
- Document Builder
- Blanket Purchase Agreements
- Contract Purchase Agreements
- Expected Shipments
- Receiving Transactions
- Trading Partners

Product Definition Module

- Items
- Structures
- Item Relationships
- **Sales Orders (New)**
- **Transaction Defaults (Planned Mar 2026)**
- **Subinventory Item Associations (Planned Mar 2026)**
- **Pricelists (Planned June 2026)**

Projects Module

- Financial Projects
- Costs
- Assets & Assignments
- Award Budgets
- Financial Plan Resource
- Assignments
- Budgets
- Rate schedules
- Cost Adjustments
- Planning Resource Breakdown Structures (RBS)
- Project Templates
- Contracts
- Amend Contract Status
- Events
- Forecasting
- Revenue Plan Schedule Overrides
- Project Progress

* Features marked as "Planned" are forecasts and not commitments to deliver functionality.